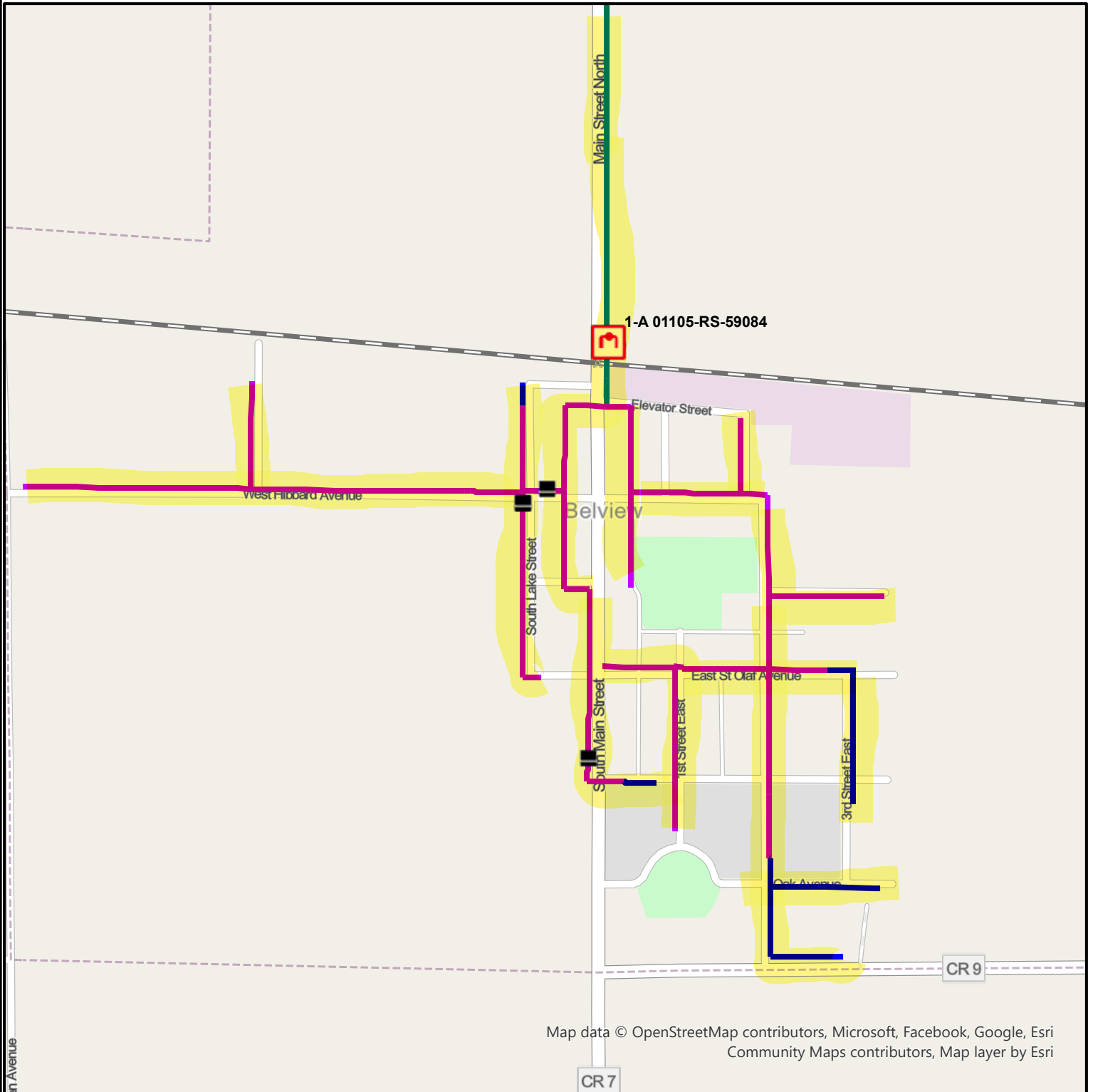
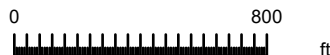


# Belview Replacement Project



Map data © OpenStreetMap contributors, Microsoft, Facebook, Google, Esri  
Community Maps contributors, Map layer by Esri

This map is for use by the intended recipient(s) only and may contain privileged, confidential or trade secret information. Do not reproduce or distribute without prior written permission. THIS INFORMATION IS PROVIDED "AS IS". NO WARRANTY OF ANY KIND IS PROVIDED, EXPRESS OR IMPLIED, INCLUDING BUT NOT LIMITED TO NON[1]INFRINGEMENT, QUALITY, ACCURACY, COMPLETENESS, FITNESS FOR A PARTICULAR PURPOSE, OR THAT THE INFORMATION WILL BE ERROR FREE. To the fullest extent allowed by law, Company shall not be liable for any claim, demand, or action, regardless of the nature of the cause, alleging any loss, injury, or damages, direct or indirect, which may result from the use or possession of this information, whether in an action in contract or tort or based on a warranty, even if Company has been advised of the possibility of such damages. All information is subject to change without notice. This map is intended for reference only and is not to be relied upon for construction purposes. FIELD LOCATES ARE REQUIRED FOR LOCATION OF UTILITY FACILITIES.  
© Montana-Dakota Utilities, BING AERIAL IMAGERY



label1

## Notes

194 Service Lines and 13,000' of main